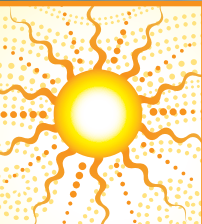
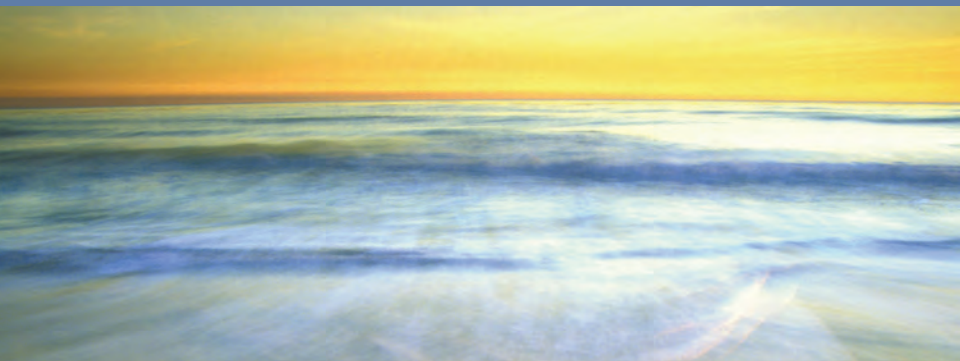


How can you help families concerned about a loved one with substance use or emotional problems? You can save lives and relationships by becoming an ARISE Interventionist.

The ARISE Model

INVITATIONAL INTERVENTION

ARISE is an evidence based, best practice method



**Offering Two Opportunities to Complete
Part 1 of the ARISE certification:**

Part I: Educational 3-Day Skilled Based Training

Part II: Clinical Supervision

Presented by:



Co-Sponsored by:



WEST COAST TRAINING

June 11-13, 2008

**Hyatt Westlake Plaza
Westlake Village, CA**

SOUTHEAST TRAINING

July 16-18, 2008

**Downtown Marriott
Memphis, TN**

INVITATIONAL INTERVENTION:

The ARISE model (A Relational Intervention Sequence for Engagement) is a three-level method designed to respond to the interest and concern of family members and others to motivate a resistant substance abuser or individual with behavioral problems to enter into treatment.



*The two training events will be identical in instruction and materials offered. Trainees will receive the ARISE training manual and a copy of the revised book: **Invitational Intervention: A Step by Step Guide for Clinicians Helping Families Engage Resistant Substance Abusers in Treatment.***

CERTIFICATION AND BENEFITS

Upon successful completion of this training, you will:

Have completed the educational requirements towards becoming a Certified ARISE Interventionist

Receive a certificate for 18 continuing education credits hours

Become a Certified ARISE Interventionist (CAI) upon completion of two successful ARISE cases under supervision of a ARISE trainer

Be eligible to purchase telephone consultation from an ARISE trainer at a reduced rate

Receive complementary certification for one year from the time of completion of both educational and clinical requirements

Be eligible to join the Association of Certified ARISE Interventionists as an Associate Member pending completion of the clinical requirement for CAI at which time you become eligible for Clinical Membership

Have completed the educational requirement necessary to become a Board Registered Interventionist I (BRI I) with IODAPCA (Illinois Alcohol and Other Drug Abuse Professional Certification).

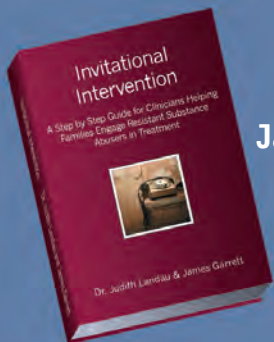
Advanced courses are available for BRI II Training

MEET THE EXPERT TRAINERS

Judith Landau, MD, DPM, LMFT, CFLE, CAI, BRII
President of
Linking Human Systems LLC,
Recovery Resource Center,
Co-Author of
"Invitational Intervention"



James Garrett, LCSW-R, CAI, BRII
Vice President of
Linking Human Systems LLC,
Recovery Resource Center,
Co-Author of
"Invitational Intervention"



Presented by:

Co-Sponsored by:

Westlake Exhibitor:



Register Today, Space is Limited:

Call **877-345-3274**

Online at **www.DualDiagnosis.org/events**

LEARNING OBJECTIVES

After attending this skill-based course,
the participant will be able to:

Compare and contrast the three Intervention models: Johnson, Systemic, and ARISE

Discuss all three Levels of the ARISE Model

Conduct all three Levels of the ARISE Intervention

Develop and deliver Recovery Messages and mobilize Family Motivation to Change

Identify various risk-factors and safety issues

Discuss underlying principles of the Recovery Message, Family Motivation to Change, and the competence/resilience of the family and natural support system

Please visit LinkingHumanSystems.com to review the ARISE journal articles.

SATISFACTORY COMPLETION: Participants must have paid tuition fee and completed an online Attendance/Evaluation form in order to receive a continuing education certificate. Participants not fulfilling these requirements will not receive a certificate. Failure to complete the online Attendance/ Evaluation form will result in forfeiture of credit for the entire conference. No exceptions will be made. Training must be attended in its entirety. Certificates are available immediately after completing the online form.

ADA STATEMENT: ADA accommodations will be made in accordance with the law. If you require ADA accommodations, please indicate what your needs are at the time of registration. We cannot ensure the availability of appropriate accommodations without prior notification.

PSYCHOLOGISTS: This program is co-sponsored by Amedco and Foundations Associates. Amedco is approved by the American Psychological Association to sponsor continuing education for psychologists. Amedco maintains responsibility for this program and its content. 18 hours.

PROFESSIONAL COUNSELORS: Foundations Associates is recognized by the National Board for Certified Counselors to offer continuing education for certified counselors. We adhere to NBCC continuing education guidelines. Provider #5954. 18 hours.

SOCIAL WORKERS AND MFTs: This course is co-sponsored by R. Cassidy Seminars and Foundations Associates. R. Cassidy Seminars, ASWB provider #1082, is approved as a provider for continuing education by the Association of Social Work Boards, (www.aswb.org), phone: 1- 800-225-6880) through the Approved Education (ACE) program. R. Cassidy Seminars maintains responsibility for the program. Social workers should contact their regulatory board to determine course approval. Social workers will receive 18 continuing education clock hours in participating in this course.

CA BOARD OF BEHAVIORAL SCIENCES: Course meets the qualifications for 18 hours of continuing education credit for MFTs and/or LCSWs as required by the California Board of Behavioral Sciences, Provider #PCE875.

CHEMICAL DEPENDENCY COUNSELORS: Foundations Associates is approved by NAADAC Approved Education Provider Program for 18 contact hours. Approval #000320.

CALIFORNIA NURSES: Provider approved by the CA Board of Registered Nursing, Provider #CEP13683, for 18 contact hours.

DAY 1

9:00 – 9:30	Introductions, Orientation
9:30 – 10:00	Myths and Stereotypes • Engagement: rates, cost, etc. • Family Connectedness
10:00 - 10:15	History of Intervention, Overview of Intervention Models & Strategies
10:15 – 10:30	Break
10:30 – 11:45	Introduction to Transitional Family Therapy • Competence of natural support system • Transitional Genogram: family life spiral, life stressors
11:45 – 12:30	Overview of ARISE: Why an Invitation?
12:30 – 1:30	LUNCH BREAK
1:30 – 2:15	Readiness to Change • Family Motivation to Change • "The First Call": demo & discussion • "The First Call": working with Concerned Others, what happens in a first call, First Call Worksheet, suicide, homicide, safety screening techniques • Developing the Recovery Message
2:15 – 2:30	BREAK
2:30 – 4:00	Role play: Role Play debriefing, Level 1 Choice Points (Discussion of Level 1 role play and Level 1 Choice Points) • Recovery Message (discussion)
4:00 – 4:30	Small group discussion and AIGAS

Please visit www.DualDiagnosis.org/events for complete details and updates.



DAY 2

9:00 – 10:45	Genogram • Instructions for First Meeting • Construct Family
10:45 – 11:00	BREAK
11:00 – 12:30	Role Play: First Meeting, with SA present, with SA present and high, with SA not present
12:30 – 1:30	LUNCH
1:30 – 2:30	Overview of Level 2 • Level 2 Choice Points • Safety Issues
2:30 – 2:45	BREAK
2:45 – 4:30	Role play of Level 2-with and without SA present • Debrief role play • Discussion
4:30 – 5:00	Small group discussion and AIGAS

Register Today, Space is Limited:

Call **877-345-3274** or Online at

DualDiagnosis.org/events.com

DAY 3

9:00 – 10:15	Overview of Level 3: "The ARISE Intervention" • Instructions on writing with sample letters (discussion)
10:15 – 10:30	BREAK
10:30 – 12:00	Prepare role play • Role play • Debrief role play • Discussion
12:00 – 1:00	LUNCH
1:00 – 1:15	Person of the Interventionist: spirituality, techniques for anxiety control , meeting attendance, relapse prevention
1:15 – 2:30	Ethical Considerations of an Interventionist • Certified ARISE Interventionist criteria • Association of Certified ARISE Interventionists • Introduction and review of ARISE Costs & contracts: marketing materials, adapt materials to apply to home agency/community, develop marketing strategy, advanced courses
2:30 – 2:45	BREAK
2:45 – 3:15	ARISE Interventionist case consultation to become a Certified ARISE Interventionist • AAI membership criteria, and requirements for IODAPCA Board registration • Websites: Conference call options, AboutRecovery.com, SoberCircle.com, and LinkingHumanSystems.com.
3:15 – 4:00	Small group discussion & AIGAS: Formative Evaluation, Graduation

ENJOY A PERFECT STAY

Attend the event that best meets your needs!

June 11-13, 2008

HYATT WESTLAKE PLAZA IN THOUSAND OAKS

880 S. Westlake Blvd.
Westlake Village, CA 91361
1-805-557-1234
westlake.hyatt.com



RESERVATIONS

The Hyatt will honor our special discounted rate of \$164 plus tax per night. **ALL RESERVATIONS MUST BE MADE DIRECTLY WITH THE HOTEL BEFORE MAY 20, 2008 TO RECEIVE THE DISCOUNTED RATE. ***

July 16-18, 2008

MARRIOTT MEMPHIS DOWNTOWN HOTEL **

250 North Main Street
Memphis, TN 38103
888-557-8740
Direct 901-527-7300
www.marriott.com



RESERVATIONS

The Marriott is conveniently located near the Foundations training location (see below), and will honor our special discounted rate of \$119 plus tax per night. **ALL RESERVATIONS MUST BE MADE DIRECTLY WITH THE HOTEL BEFORE JUNE 13, 2008 TO RECEIVE THE DISCOUNTED RATE. ***

*Reservations made after the above dates are based on availability. Mention the Foundations Associates group rate to receive the discount

** MEMPHIS TRAINING LOCATION: La Paloma Treatment Center, 2009 Lamar Avenue, Memphis, TN 38114, (901) 726-6053

TO REGISTER: 3-day rate \$895

Quick Registration:

Register online at DualDiagnosis.org/events.com or call the Foundations Events Hotline at 877-345-3274

By Mail or Fax:

ARISE 2008

Foundations Associates
P.O. Box 17009 • St. Paul MN 55117
Fax: 651.489.3387

- 1) Complete this form and mail it to the address shown here.
- 2) Print clearly the information as it should appear on your Nametag and Certificate of Attendance.

Name (& Credentials) _____

Professional Title _____

Agency _____

Address _____

City _____

State _____

Zip _____

Daytime Phone _____

Fax _____

E-mail Address _____

We Accept:

Check made payable to Foundations Associates

Purchase order is attached (Please include return fax # _____ so invoice can be faxed.)

 MasterCard

 Visa

 Discover

 American Express

Credit Card No. _____

Exp. Date / _____

Cardholder's Name as it appears on card _____

Cardholder's Signature _____

Credit Card Billing Address *(if different from above)* _____

REFUNDS AND CANCELLATIONS: All requests for refunds must be made in writing. Cancellations will be charged a \$100 fee. No money will be refunded for cancellations after May 16, 2008 for the first event and June 11, 2008 for the second event.

Select a Training Location:

June 11-13, 2008 - California
Hyatt Westlake Plaza
Westlake Village, CA
805-557-1234

July 16-18, 2008 - Tennessee
Downtown Marriott
Memphis, TN
888-557-8740



Foundations Associates
210 Westwood Place, Suite 120
Brentwood, TN 37027-7554
1-877-345-3274
www.DualDiagnosis.org/events

Part 1 of 2-day skill based training on

INVITATIONAL INTERVENTION

The ARISE Model

WEST COAST TRAINING

June 11-13, 2008

Hyatt Westlake Plaza
Westlake Village, CA

SOUTHEAST TRAINING

July 16-18, 2008

Downtown Marriott
Memphis, TN

**18 Hours of Continuing
Education Available!**

Pre-Sorted
Standard Mail
U.S. Postage
PAID
Nashville, TN
Permit #3984

FOU-13